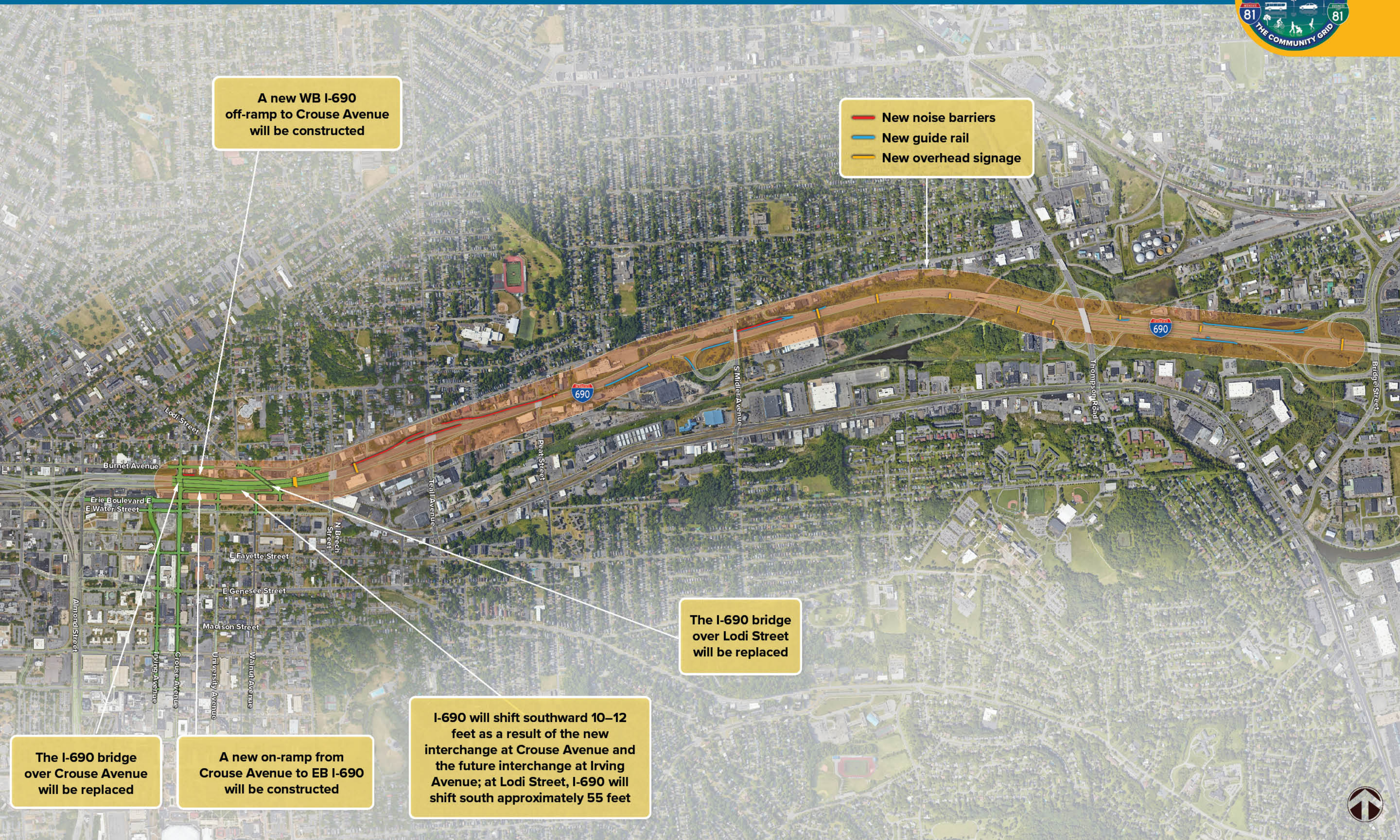


# Reconstruction of I-690 from Crouse Avenue to Beech Street



A new WB I-690 off-ramp to Crouse Avenue will be constructed

— New noise barriers  
— New guide rail  
— New overhead signage

The I-690 bridge over Lodi Street will be replaced

I-690 will shift southward 10–12 feet as a result of the new interchange at Crouse Avenue and the future interchange at Irving Avenue; at Lodi Street, I-690 will shift south approximately 55 feet

The I-690 bridge over Crouse Avenue will be replaced

A new on-ramp from Crouse Avenue to EB I-690 will be constructed