

WELCOME
TO THIS
REIMAGINE I-787
Open House



Thank you for joining the
New York State Department of Transportation
at this open house for the Reimagine I-787 study.

Please help us as we reimagine I-787 and what it could look
like in the future. Please use the comment sheets and Post-its to
provide your feedback on the boards inside.

**For free parking, please inform the parking attendant
you're here for the public meeting.**

A Spanish/English language interpreter is available.
Un intérprete de español/inglés está disponible.
Translation to multiple languages is available via Lingualinx.

Please visit the study website at 787.dot.ny.gov



Department of
Transportation

Where We Are and Where We're Going



What We've Heard So Far

The study has received about 1,000 public comments. Major themes include:

- Waterfront access
 - Allow greater access for residents and visitors by multiple forms of transportation
 - Provide access that is inclusive of all residents
- Economic development opportunities
 - Capitalize on Albany's waterfront location
- Bike/pedestrian connectivity
 - Safety highly important; need to prioritize the safety needs of cyclists and pedestrians
- Urban design considerations
 - Human-scale design needed
 - Design for future climate change concerns and with recreational elements
- Design concepts
 - Boulevard
 - Remove/reduce transportation footprint
- Leave or improve highway as is
- Tunnel
- Relocate Dunn Memorial Bridge
- Albany Waterway/Canal
- Importance of natural and cultural resources
 - Highlight Albany's rich history
 - Protect sensitive water and ecological resources
- Environmental justice considerations
 - Recognize and address the long history of diminished access for minority and low-income populations
 - Reduce reliance on cars
- Traffic concerns
 - Give more focus to bike/pedestrian elements in roadway design
 - Make it less of a car culture and more of a future-facing and vital urban place



The purpose, needs, and objectives provide the basis for evaluating the range of concepts that have been developed for Reimagine I-787

PROPOSED PURPOSE

The purpose of proposed future projects is to create an improved, multimodal transportation corridor that supports long-range transportation planning efforts within the Reimagine I-787 study limits while addressing identified inefficiencies of the existing highway



NEEDS

Proposed future projects are needed to:

- Address highway and roadway network inefficiencies
- Address structural deficiencies
- Address pedestrian and bicycle network deficiencies and improve connectivity
- Improve connectivity to the waterfront, between neighborhoods, and to and from key destinations



Proposed Objectives

The purpose, needs, and objectives provide the basis for evaluating the range of concepts that have been developed for Reimagine I-787



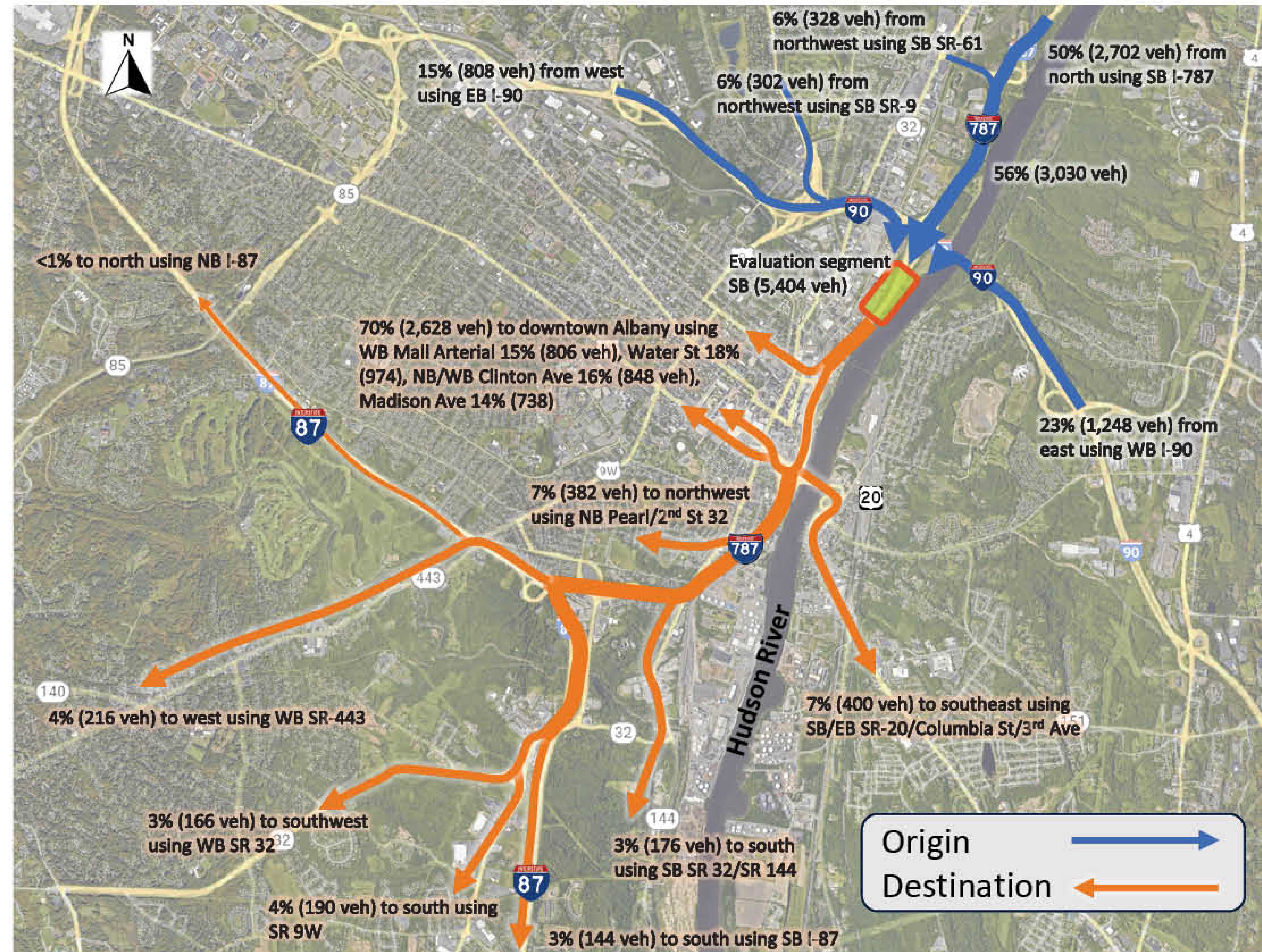
Reimagine I-787's proposed objectives are to:

- Enhance waterfront access
- Enhance access between neighborhoods and to and from key destinations
- Re-align the design of existing highways and roadways to meet current and future demand
- Improve connectivity for pedestrians and bicyclists
- Provide pedestrian and bicycle infrastructure that meets current design standards (i.e., Public Right-of-Way Accessibility Guidelines)
- Ensure acceptable transportation operations
- Consider long-range planning efforts
- Achieve and maintain state of good repair

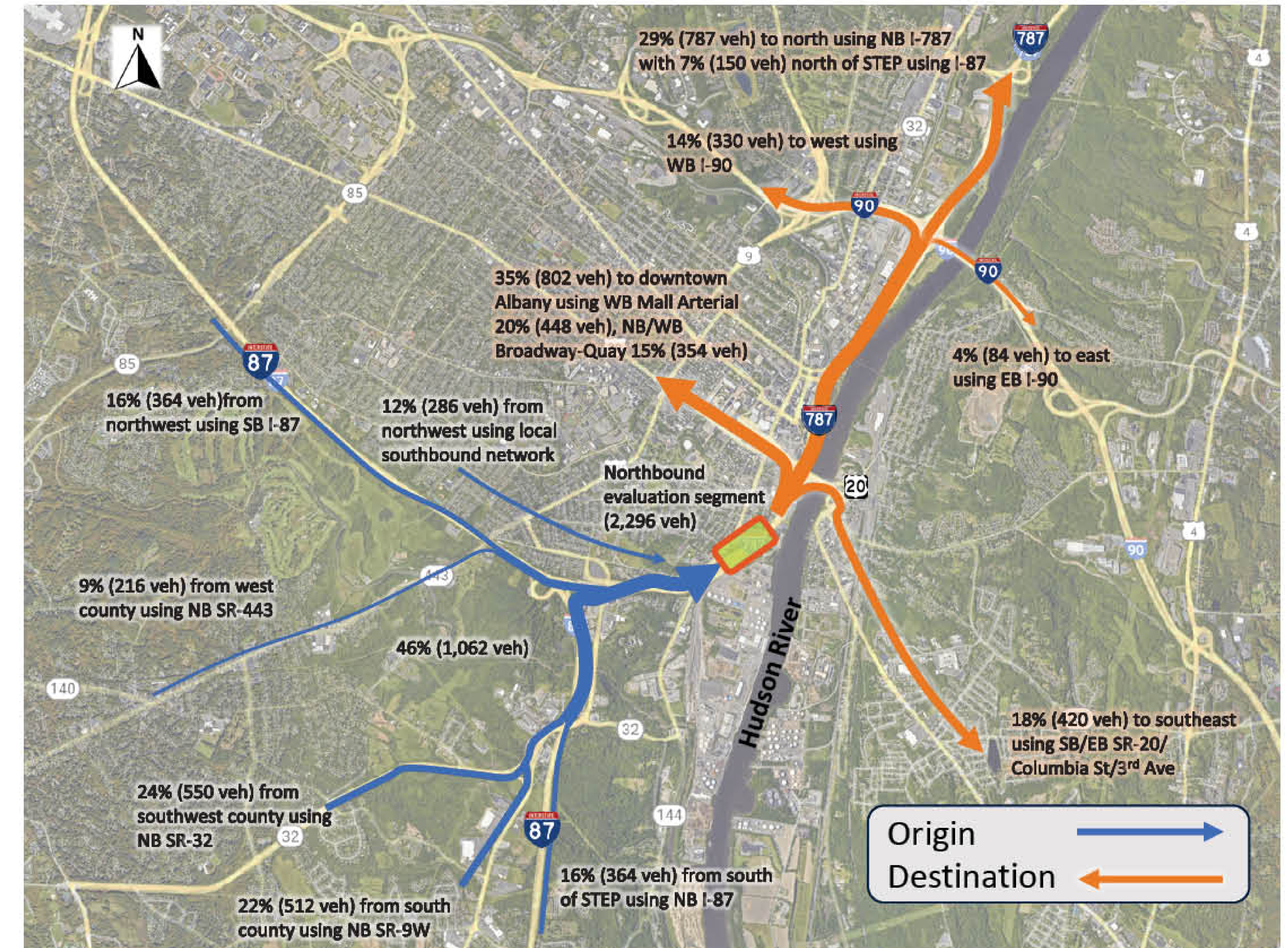


Where are motorists starting and ending their trips?

Travel Patterns, Southbound I-787

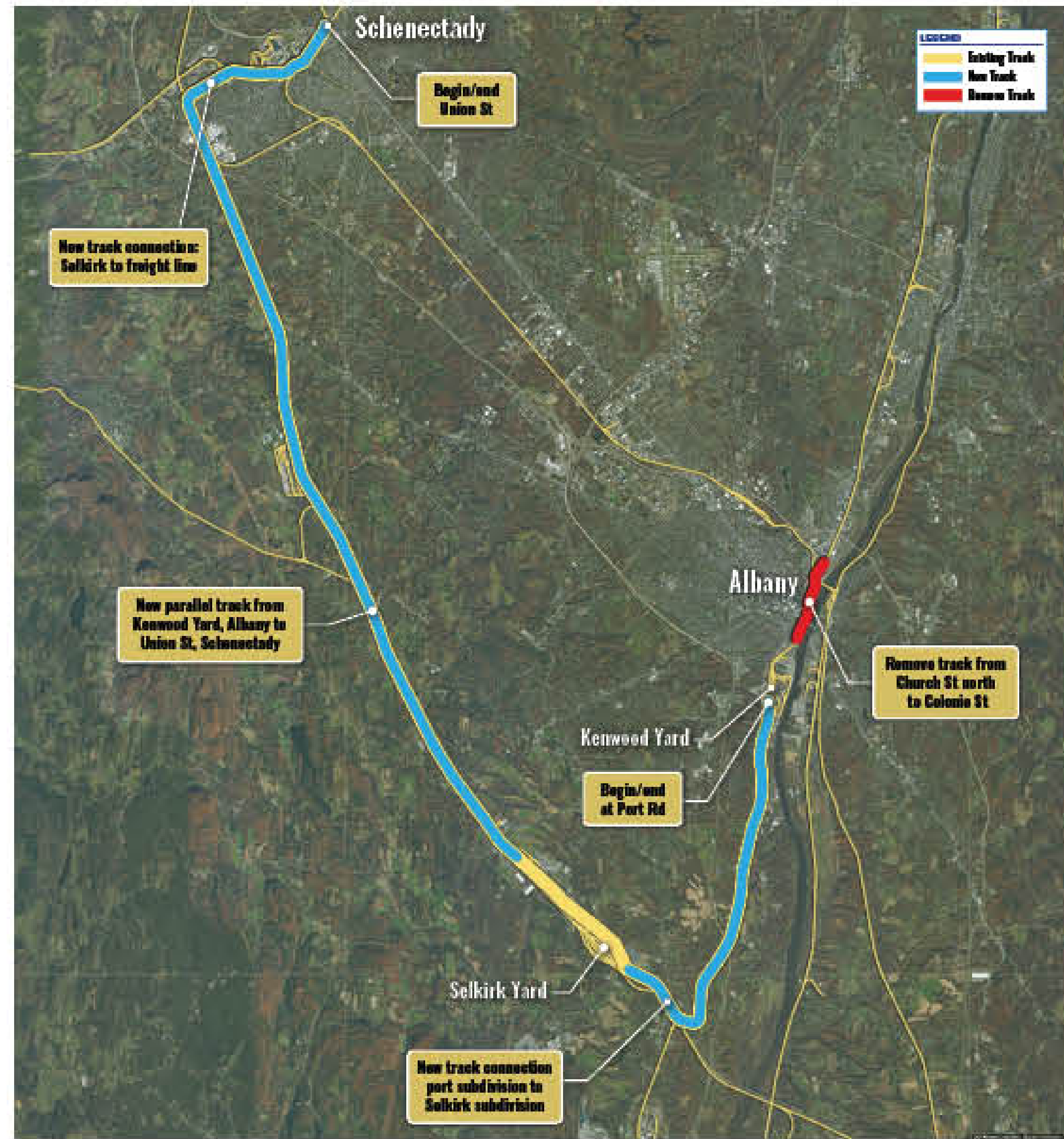


Travel Patterns, Northbound I-787



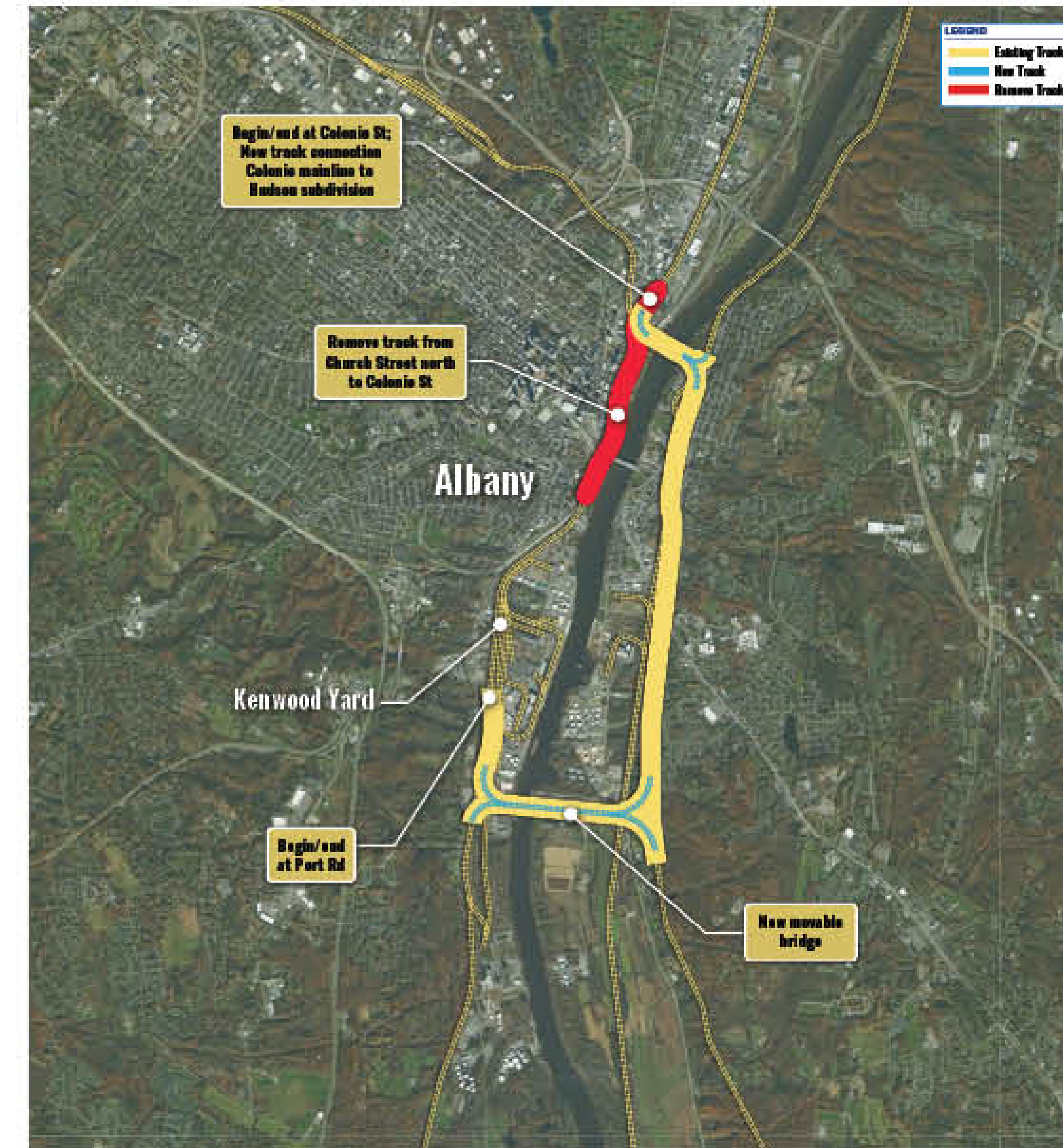
Based on traffic volumes counted at a particular location (see evaluation segments on maps), initial results from Capital Region Transportation Council's Systematic Transportation Evaluation and Planning (STEP) travel demand model suggest:

- The most popular destination for I-787 motorists is the downtown area
- Most SB motorists end their trips in or near the downtown area or in the South End; about half of NB motorists also are headed downtown
- Some motorists (from both directions) are headed across the Dunn to the east side of the river
- A smaller proportion of SB traffic continues to I-87 or points south
- More traffic arrives from points north of I-90 rather than south



Option A

- Remove track from Church Street north to Colonie Street
- Construct new parallel track from Kenwood Yard to Union Street, Schenectady



Option B

- Remove track from Church Street north to Colonie Street
- Construct new movable bridge
- Use existing track east of the Hudson River



Option C

- Realign track within corridor depending on future I-787 configuration

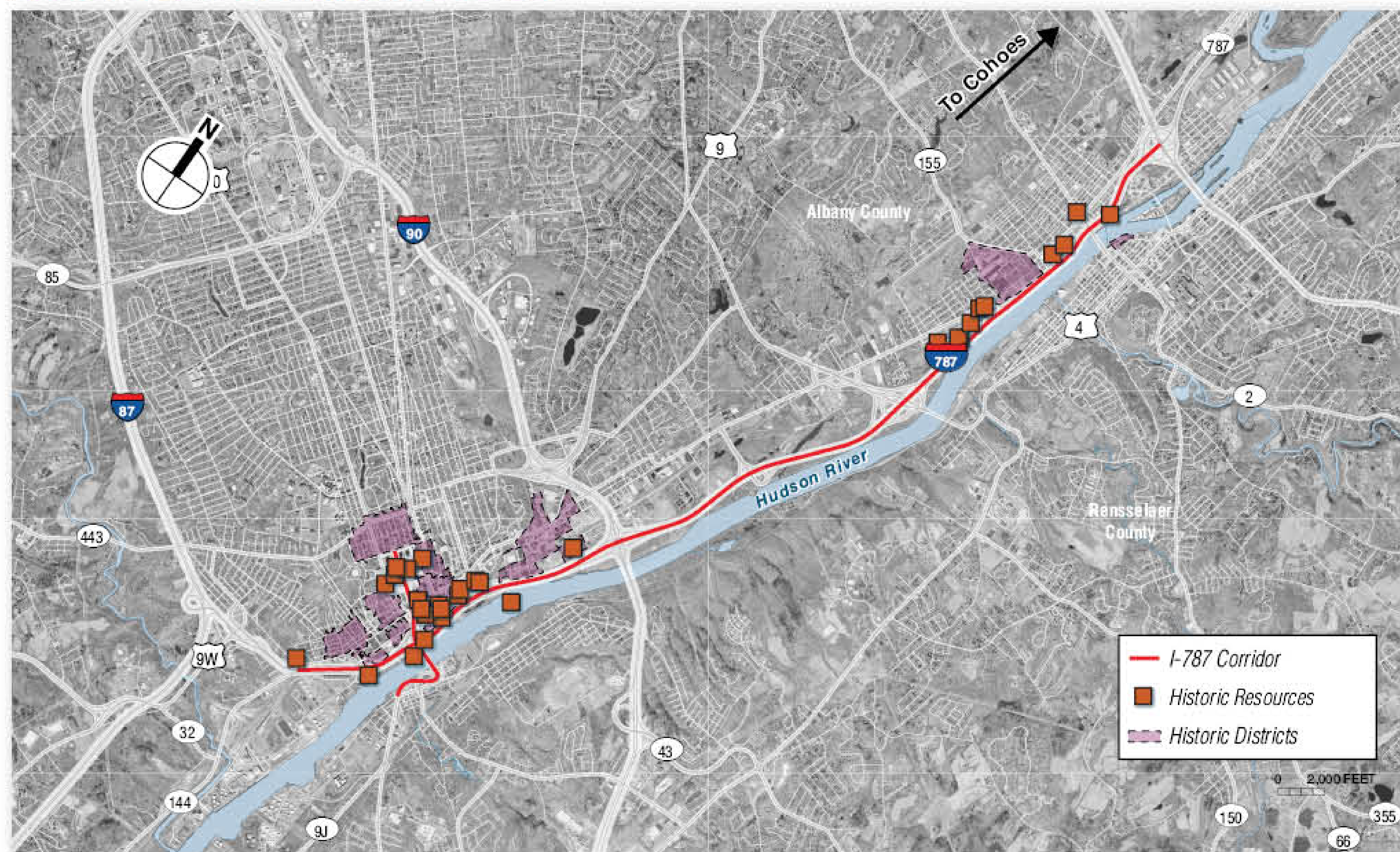


Option D

- Railroad remains as is
- Configure I-787 concepts to fit with existing railroad alignment

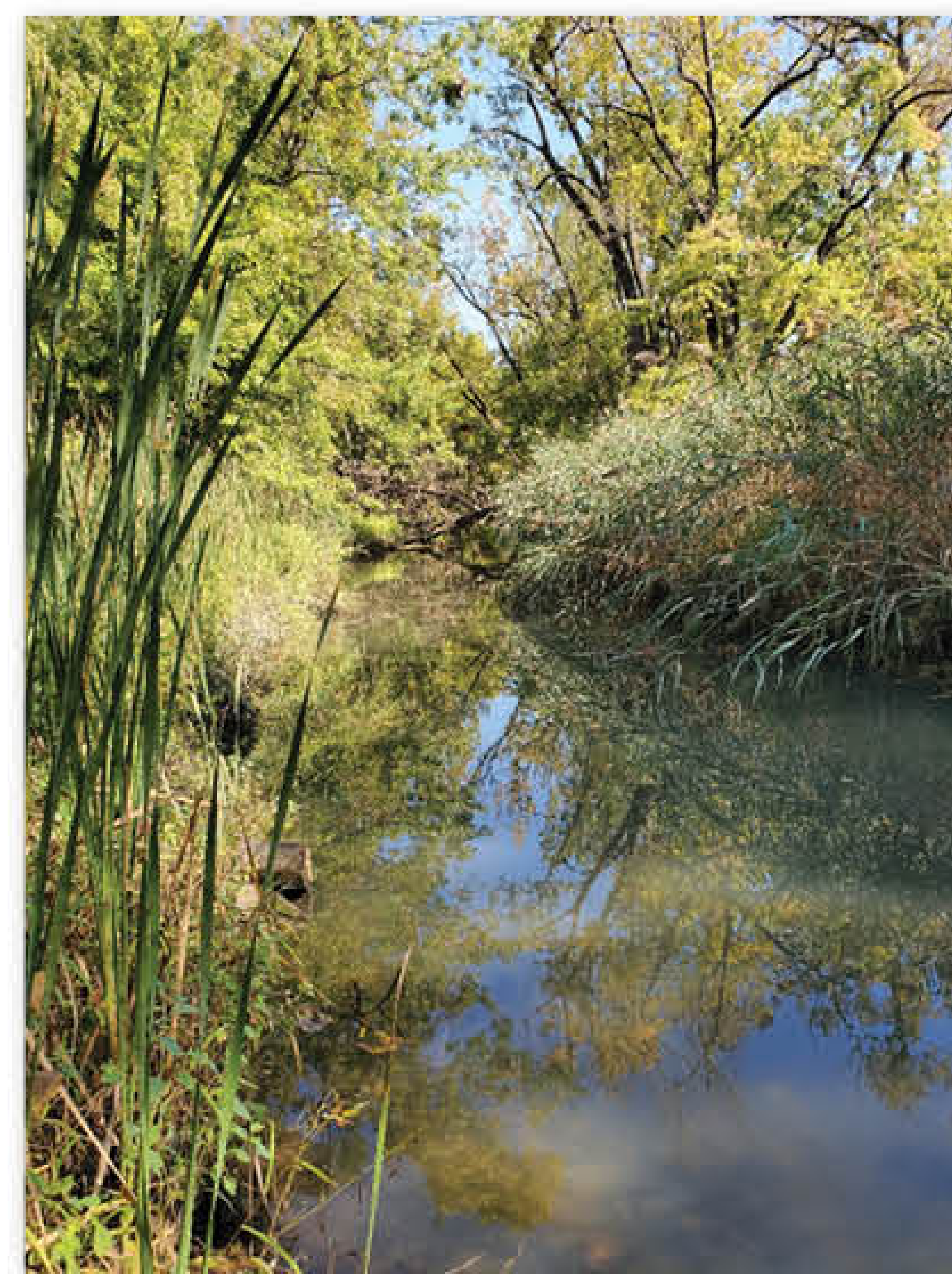
Key environmental considerations in this PEL study include:

Historic and Cultural Resources



The area has a rich history that includes Native American habitation, Dutch and English colonial settlement, and creation of the Erie Canal. Portions of the study area are expected to possess high archaeological sensitivity.

The social, economic, and environmental effects of a proposed project would be assessed as part of a future environmental review process.

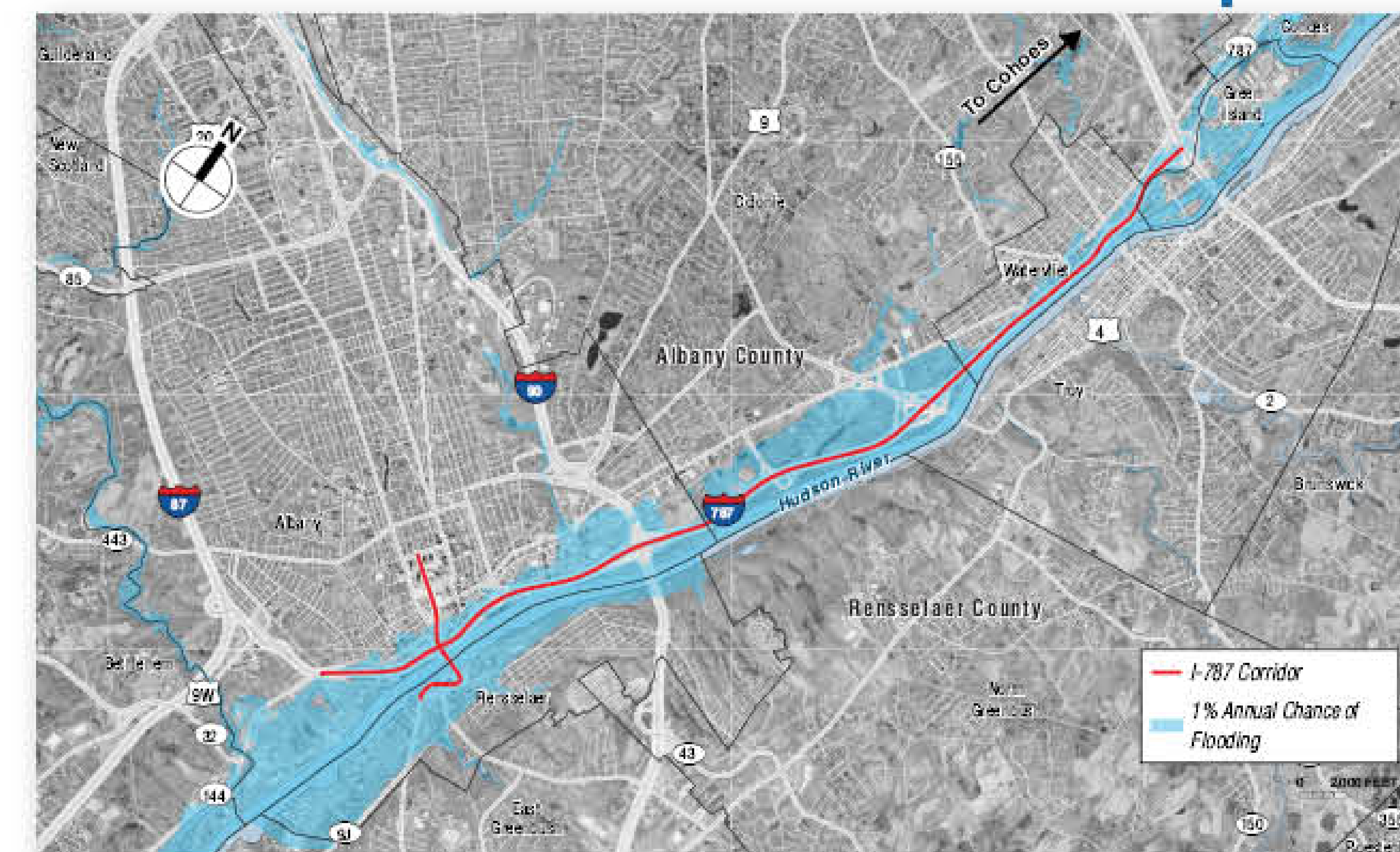


Watercourses

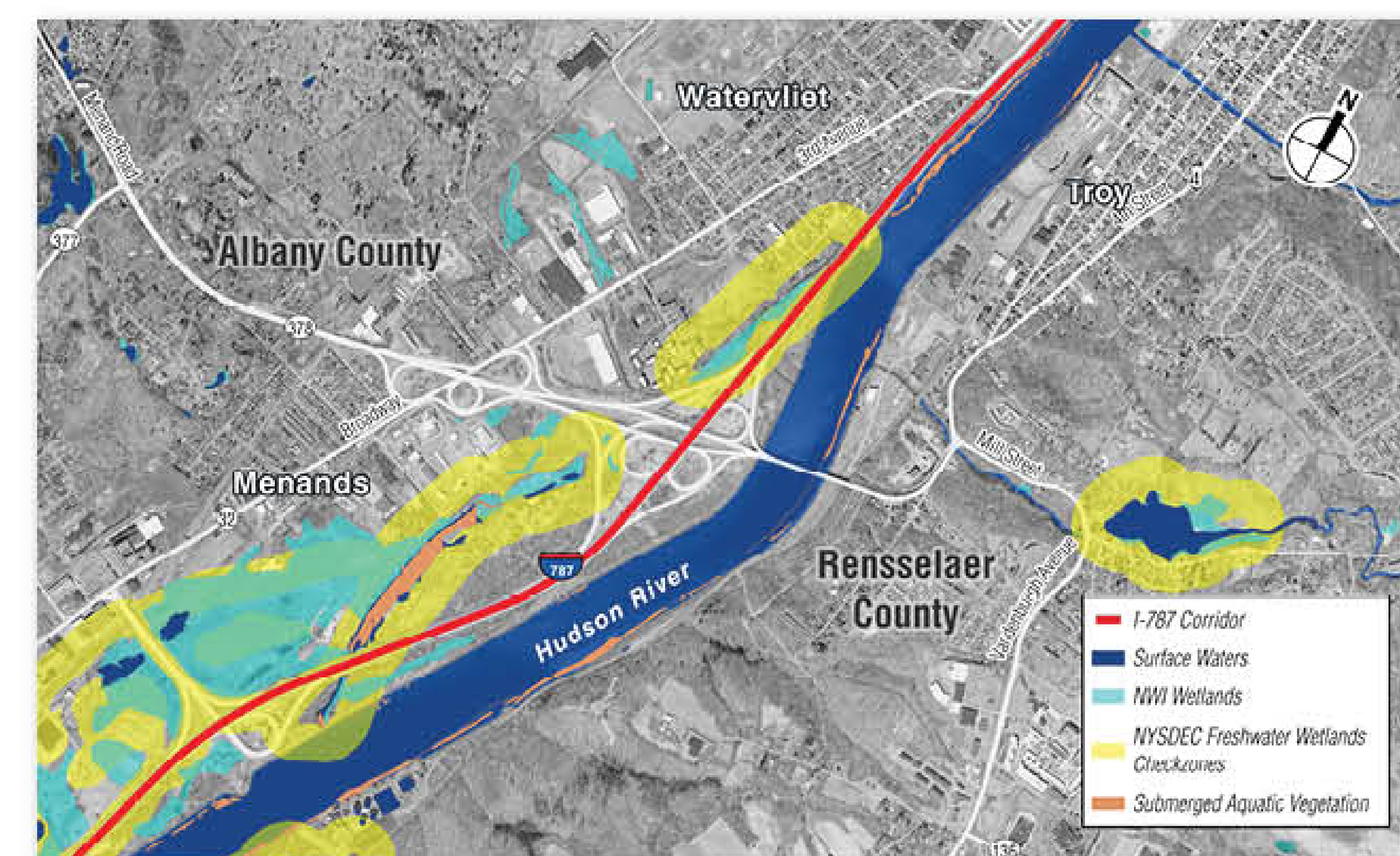


Upper Hudson River Estuary

Floodplains



Wetlands, Surface Waters, and Submerged Aquatic Vegetation



Title VI of the Civil Rights Act of 1964, and related statutes, requires there be no discrimination in federally assisted programs on the basis of race, color, national origin, age, sex, or disability.

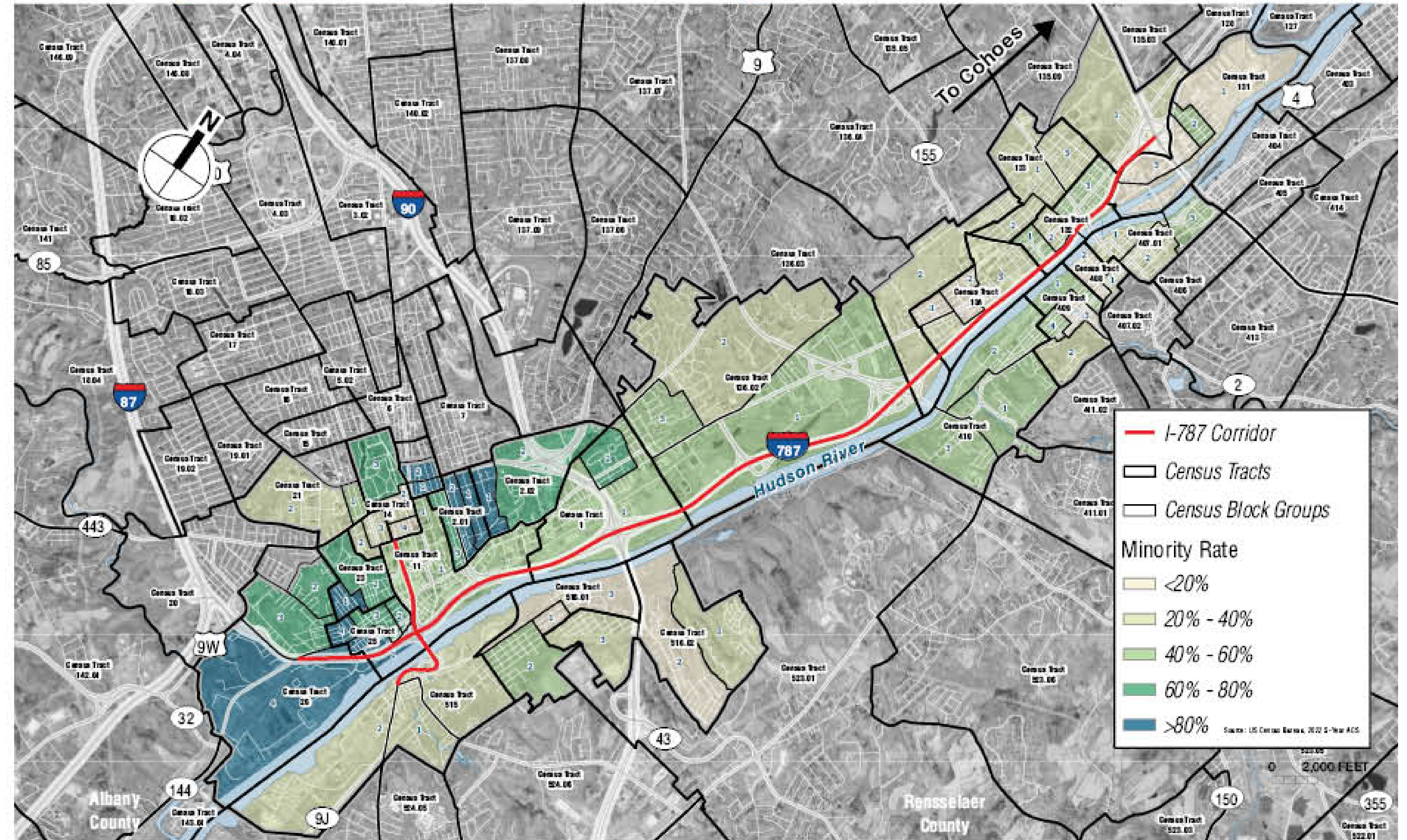
Executive Order (EO) 12898, Federal Actions to Address Environmental Justice in Minority Populations and Low-Income Populations outlines the federal government’s environmental justice policy.

- Environmental justice is the fair treatment and meaningful involvement of all people regardless of race, color, national origin, or income with respect to the development, implementation, and enforcement of environmental laws, regulations, and policies.
- Federal agencies are required to identify and address the disproportionately high or adverse human health and environmental effects of their programs, policies, and activities, on minority and low-income populations in the United States.

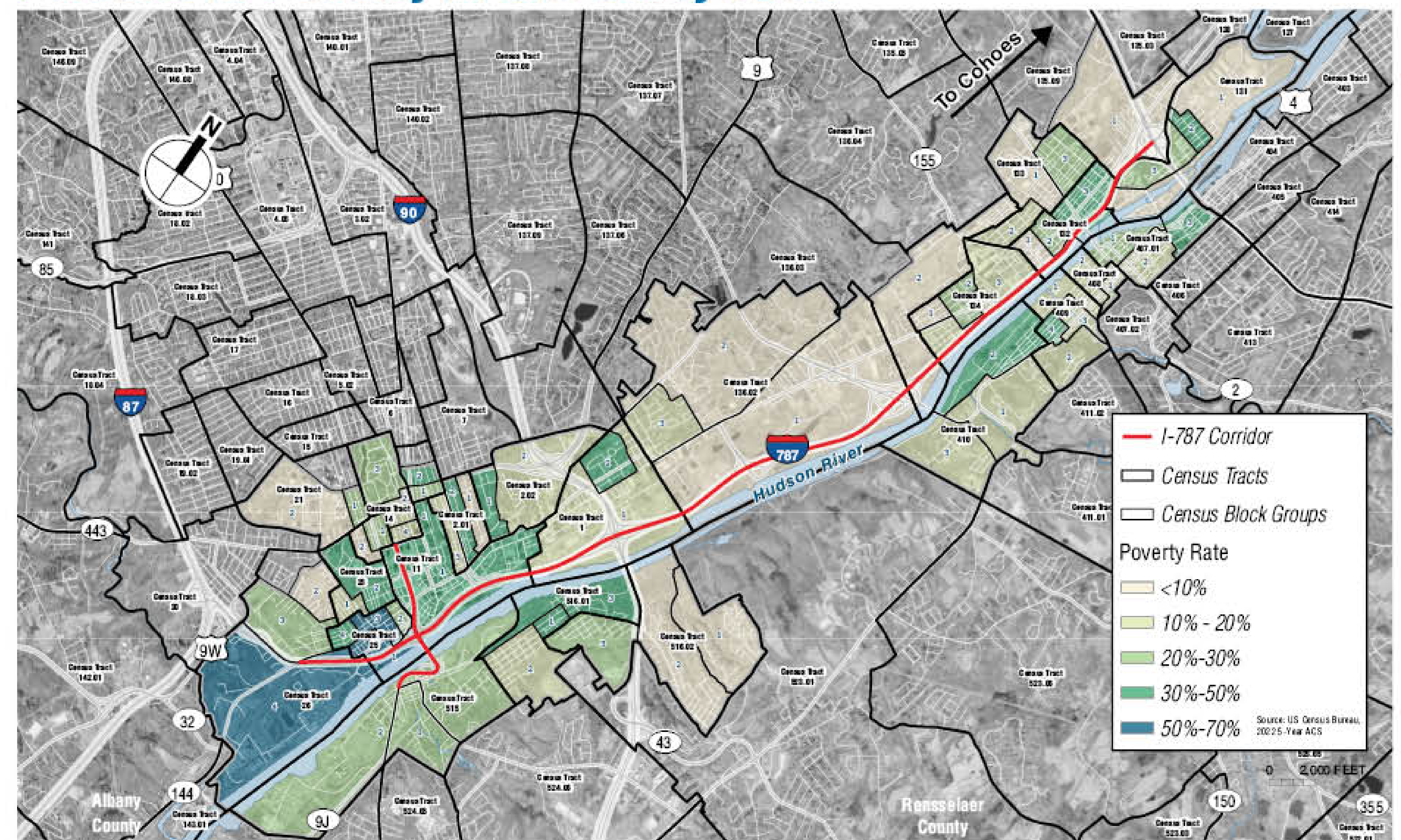
EO 13985, Advancing Racial Equity and Support for Underserved Communities Through the Federal Government serves to “pursue a comprehensive approach to advancing equity for all, including people of color and others who have been historically underserved, marginalized, and adversely affected by persistent poverty and inequality.”

The Climate Leadership and Community Protection Act (CLCPA) ensures equity and inclusion in climate actions for all communities, especially disadvantaged communities, so everyone can benefit from the State’s investments and opportunities, like reducing pollution and creating new jobs and economic opportunities.

Minority Populations in the Study Area



Persons in Poverty in the Study Area



Public participation is important to this process

NYSDOT wants your continued feedback and an open, transparent discussion of study issues and details. We are committed to providing meaningful opportunities for public engagement and agency coordination throughout the study. We encourage you to participate.

Native Nation and Agency Coordination NYSDOT is coordinating with:

- Stockbridge-Munsee
- Delaware Tribe
- St. Regis Mohawk
- New York State Department of Environmental Conservation (NYSDEC)
- New York State Office of Parks, Recreation and Historic Preservation—State Historic Preservation Officer (SHPO)
- U.S. Army Corps of Engineers (USACE)
- U.S. Coast Guard
- U.S. Environmental Protection Agency (EPA)
- U.S. Fish and Wildlife Service (USFWS)



Public involvement tools include:

- Public meetings/open houses at project milestones
- Additional meetings with stakeholders
- Stakeholders' Committee, Steering Committee, Municipal Committee
- Meetings with elected officials, interested parties, and individuals
- Information booths at fairs and festivals
- Project website: 787.dot.ny.gov
- Project email: 787@dot.ny.gov
- Project hotline: 518-457-1787
- Mailing list
- Project document viewing sites throughout the project area
- Environmental justice outreach
- Outreach to populations with limited English proficiency