

Reimagining I-787 Planning and Environmental Linkage (PEL) Study

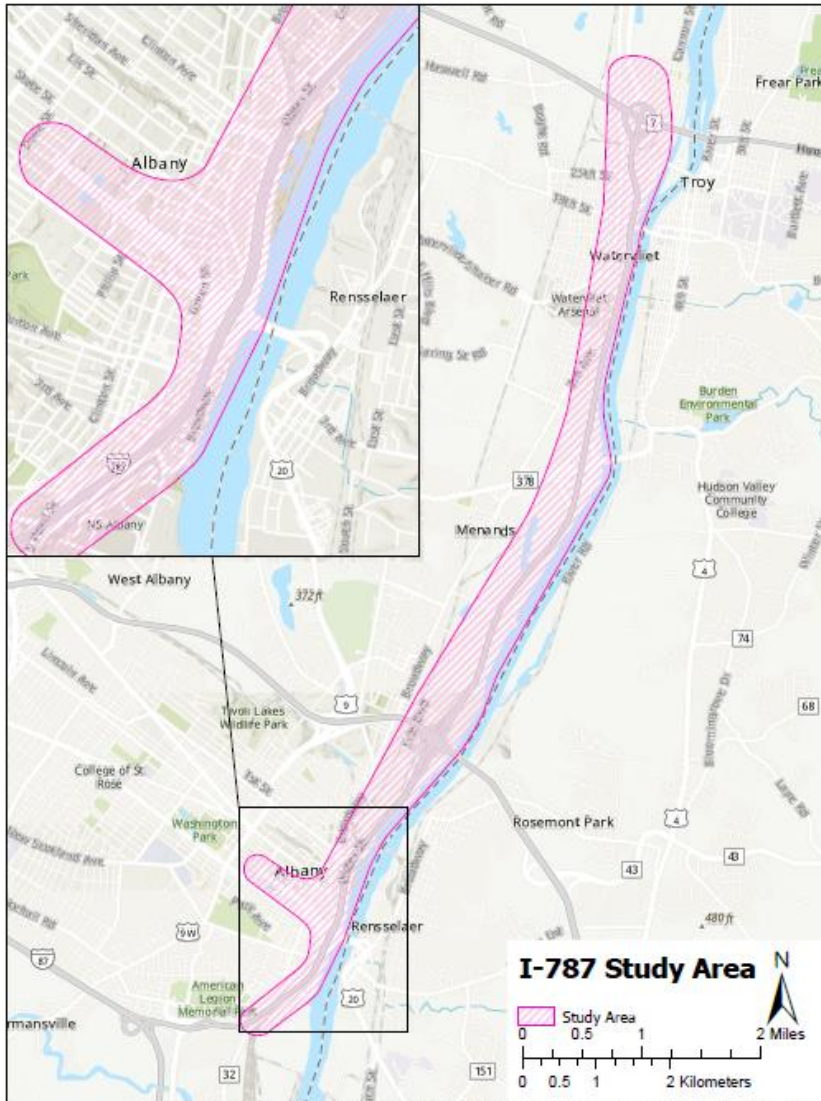


Project Management Team

- ➔ Kelley Kircher
 - ❑ NYSDOT Co-Project Manager
- ➔ Greg Wichser
 - ❑ NYSDOT Co-Project Manager
- ➔ Parsons Transportation Group – Prime Consultant
- ➔ Fisher Associates – Sub for Landscape Architecture, Concepts
- ➔ Creighton Manning Engineering – Sub for Traffic Engineering
- ➔ Foit-Albert – Sub for Survey and Right of Way
- ➔ AKRF – Sub for Environmental

Study Area

- ➔ South: I-87 Thruway Interchange 23
- ➔ North: Route 7 Interchange
- ➔ East: Hudson River
- ➔ West: Empire State Plaza



Study Scope



I-787/Hudson Waterfront Corridor Study

Albany County, New York

FINAL REPORT

December 2018



Prepared for:

Capital District Transportation Committee
One Park Place
Albany, New York 12205



Prepared by:

CHA Consulting, Inc.
111 Winners Circle P.O. Box 5269
Albany, New York 12205

- ➔ Area A – CP Rail Facility Modification/Operations Analysis
- ➔ Area B – I-787/Dunn Memorial Bridge/South Mall Expressway Reconfiguration
- ➔ Area C – Albany Inner Harbor/Historic District Development Concepts
- ➔ Area D – Other Access Opportunities

What is a PEL?

- ➔ Planning and Environmental Linkages (PEL) is a **collaborative transportation decision-making approach that:**
 - ❑ Considers community vision, environmental, and economic goals early in the transportation planning process
 - ❑ Uses the information, analysis, and products developed during planning to inform the environmental review process
- ➔ **Ultimate goal of PEL** is to reduce duplication of effort and facilitate informed decisions to expedite project delivery

PEL Process Outline

Data collection and Analysis of Existing Conditions

Initiate Public Involvement and Agency Coordination

Draft Purpose and Need, Project Objectives

Concept Development

Assess Social, Environmental, and Economic Impacts

Complete Project Scoping/PEL Report

Seamless transition to future NEPA Review

Outreach Activities

- ➔ Agency Coordination
- ➔ Municipal Partnering Committee
- ➔ Stakeholder Committee
 - ❑ Broader Group of Community Representatives
- ➔ Public Meetings and Workshops
 - ❑ Various stages of the process
- ➔ Communication Tools
 - ❑ Individual Stakeholder Meetings
 - ❑ Online/NYSDOT Twitter
 - ❑ Project Contact List/Press Releases



Preliminary Timeline

- ➔ April '23 – Begin study, begin Existing Conditions and Data Collection
- ➔ Spring '23 – Initiate Official Municipality, Stakeholder, and Public Outreach
 - ❑ Full public stakeholder and outreach plan will be developed
- ➔ Public Meetings
 - ❑ Dynamic outreach in addition to meetings
- ➔ Fall '24 – Draft PEL study available for review
- ➔ December '24 – PEL Report Complete

Contact/Discussion

Website: dot.ny.gov/787

E-mail: 787@dot.ny.gov

Phone: 518-457-1787

