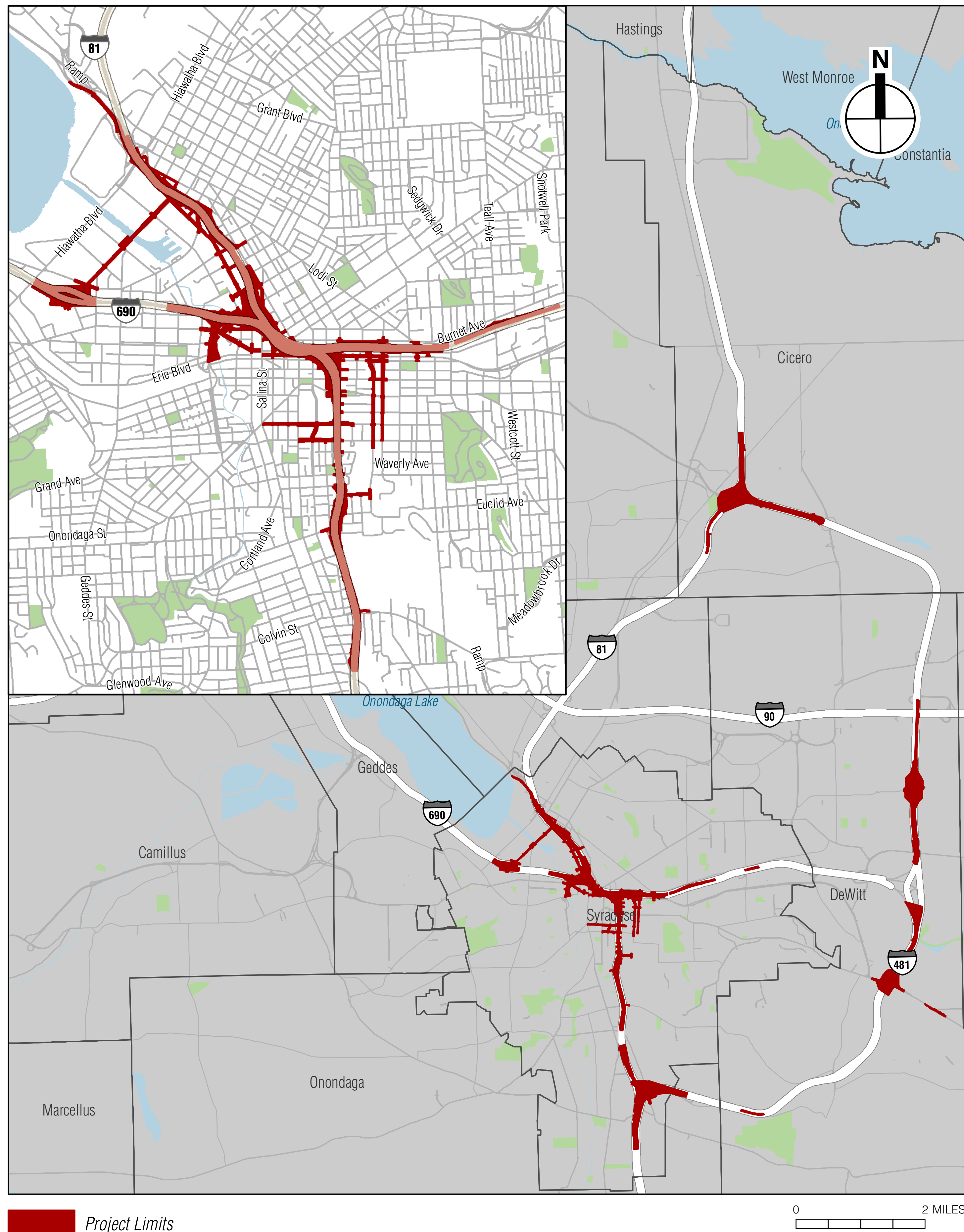


Project Area, Purpose and Need, and Objectives

Project Area



The Purpose of the Project is to address the structural deficiencies and non-standard highway features while creating an improved transportation corridor through the City of Syracuse that meets transportation needs and provides the infrastructure to support long-range transportation planning efforts.

Why is the Project Needed?

- Improve Traffic Flow and Safety
- Address Non-Standard and Non-Conforming Design Features
- Address Aging Infrastructure
- Improve Transportation Infrastructure to Support Long-Range Planning Efforts
- Improve Pedestrian and Bicycle Infrastructure
- Improve Transit Amenities

Project Objectives

To meet the Project's purpose, five project objectives were established:

- Address the transportation network structural deficiencies, particularly associated with aging bridge structures and non-standard/non-conforming design features within the project limits along I-81 and I-690.
- Address vehicular, pedestrian, and bicycle geometric and operational deficiencies within the project limits.
- Maintain or enhance vehicle access to the interstate highway network and key destinations (i.e., business districts, hospitals, and institutions) within neighborhoods within and near Downtown Syracuse.
- Maintain or enhance the vehicular, pedestrian, and bicycle connections in the local street network within the project limits in and near Downtown Syracuse to allow for connectivity between neighborhoods, business districts, and other key destinations.
- Maintain access to existing local bus service and enhance transit amenities¹ within the project limits in and near Downtown Syracuse.

¹Transit amenities that may be explored could include bus stops and shelters, bus turnouts, and layover and turnaround places.