

# FREEWAY OR EXPRESSWAY

## Notes:

1. Mobile work is continuously moving or stopped for a brief period of time, less than 15 minutes.
2. Should the work duration continue on longer than the 15 minute Maximum the Work Zone Traffic Control Setup shall be reconfigured and adjusted to meet the requirements of Short-Term Stationary Left Shoulder Closure Set-up.
3. This typical may be used for vehicle based operations such as setting up stationary traffic control (placing cones, drums and signs), but is not to be used for operations that involve workers on foot performing roadway and/or appurtenance repairs.
4. The 80 FT. Roll Ahead Distance is based on ramp speeds of 45 mph or less. If speeds are greater than 45 mph increase distance to 160 FT.



W21-5  
48x48 in.



W20-1  
48x48 in.



W13-4P  
36x36 in.



Arrow Panel  
(Caution Mode)



Work Vehicle



Shadow Vehicle with TMIA

## NYS DOT WORK ZONE TRAFFIC CONTROL

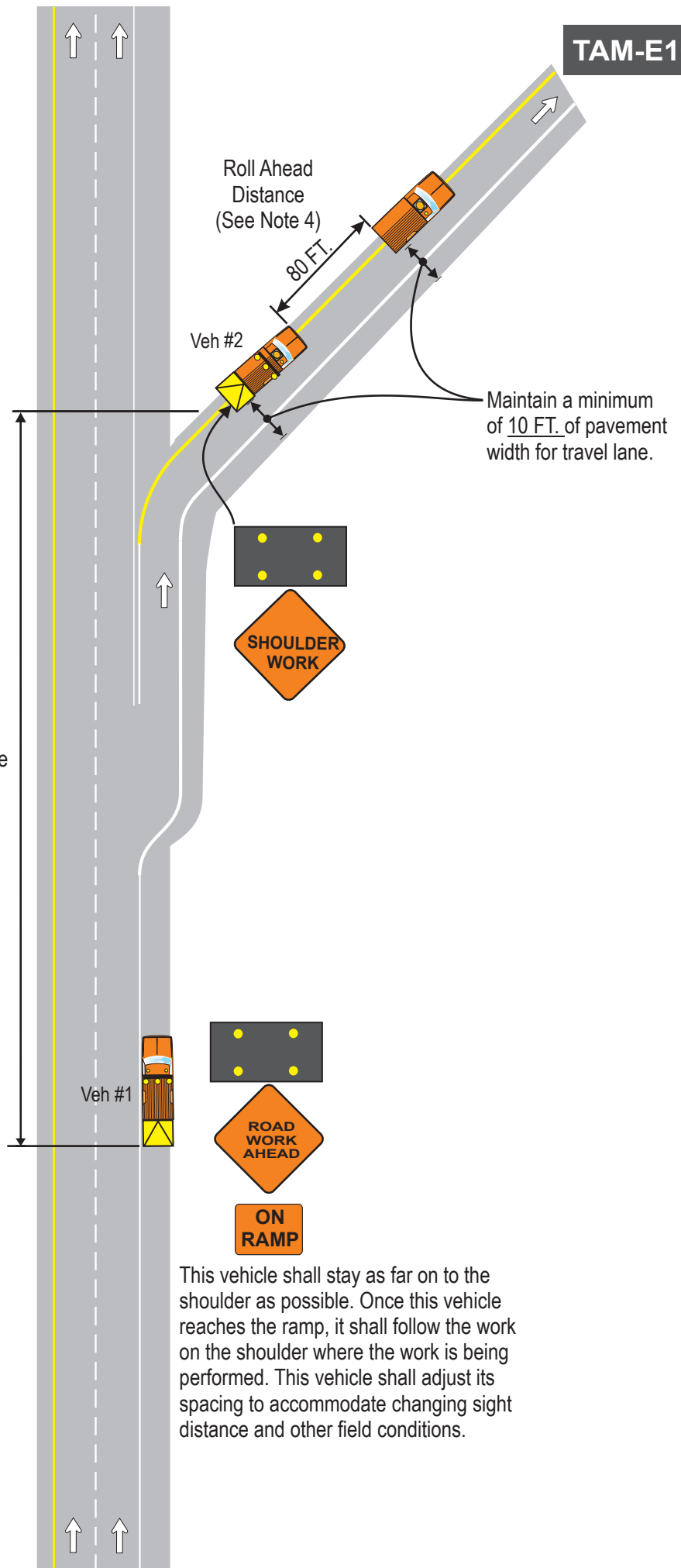
### MOBILE OPERATION INVOLVING SHOULDER CLOSURE ON RAMP ON FREEWAY OR EXPRESSWAY

APRIL 2019

TAM-E10

Rev. 2019V.01

TAM-E10



NOT TO SCALE