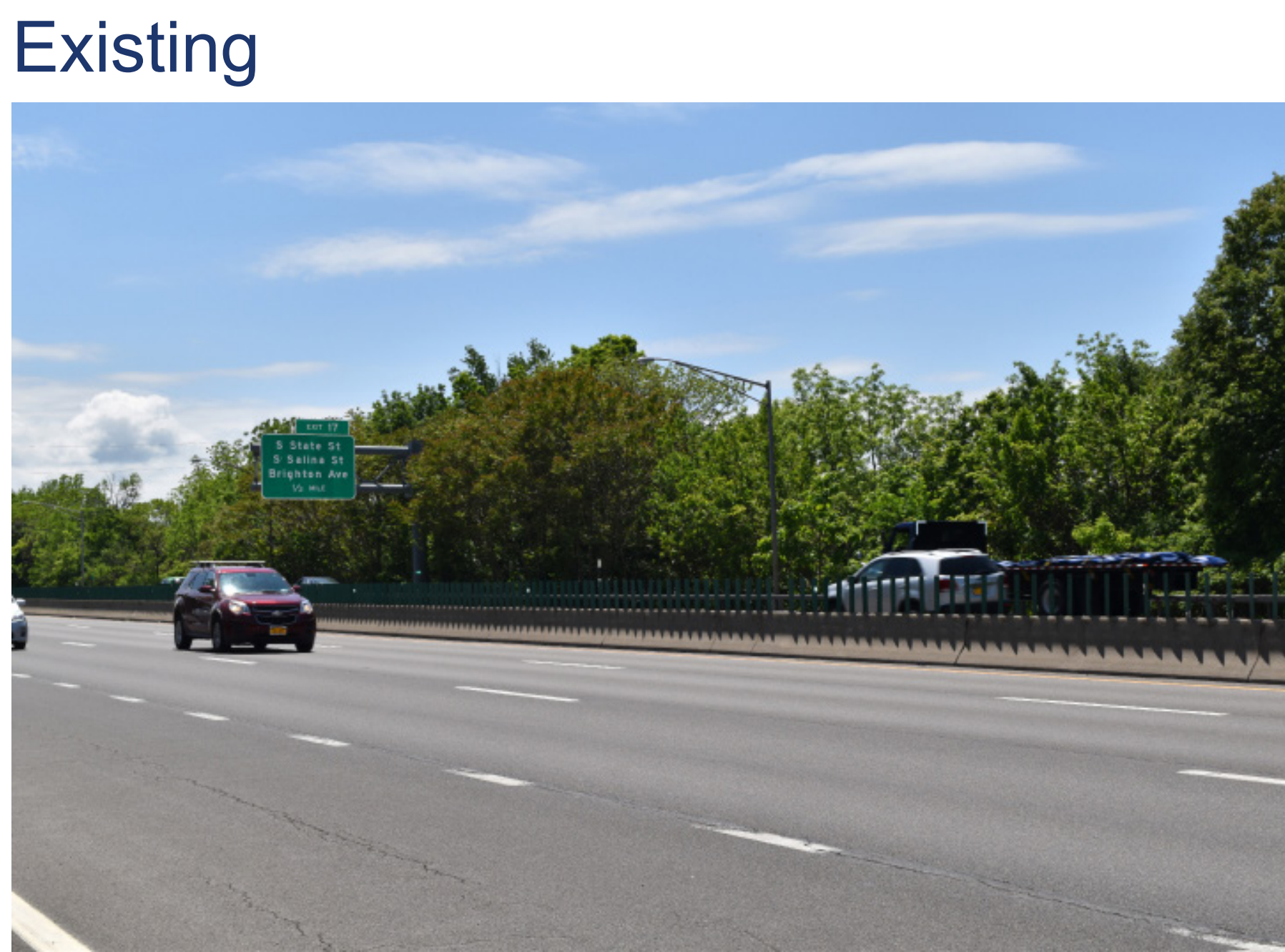


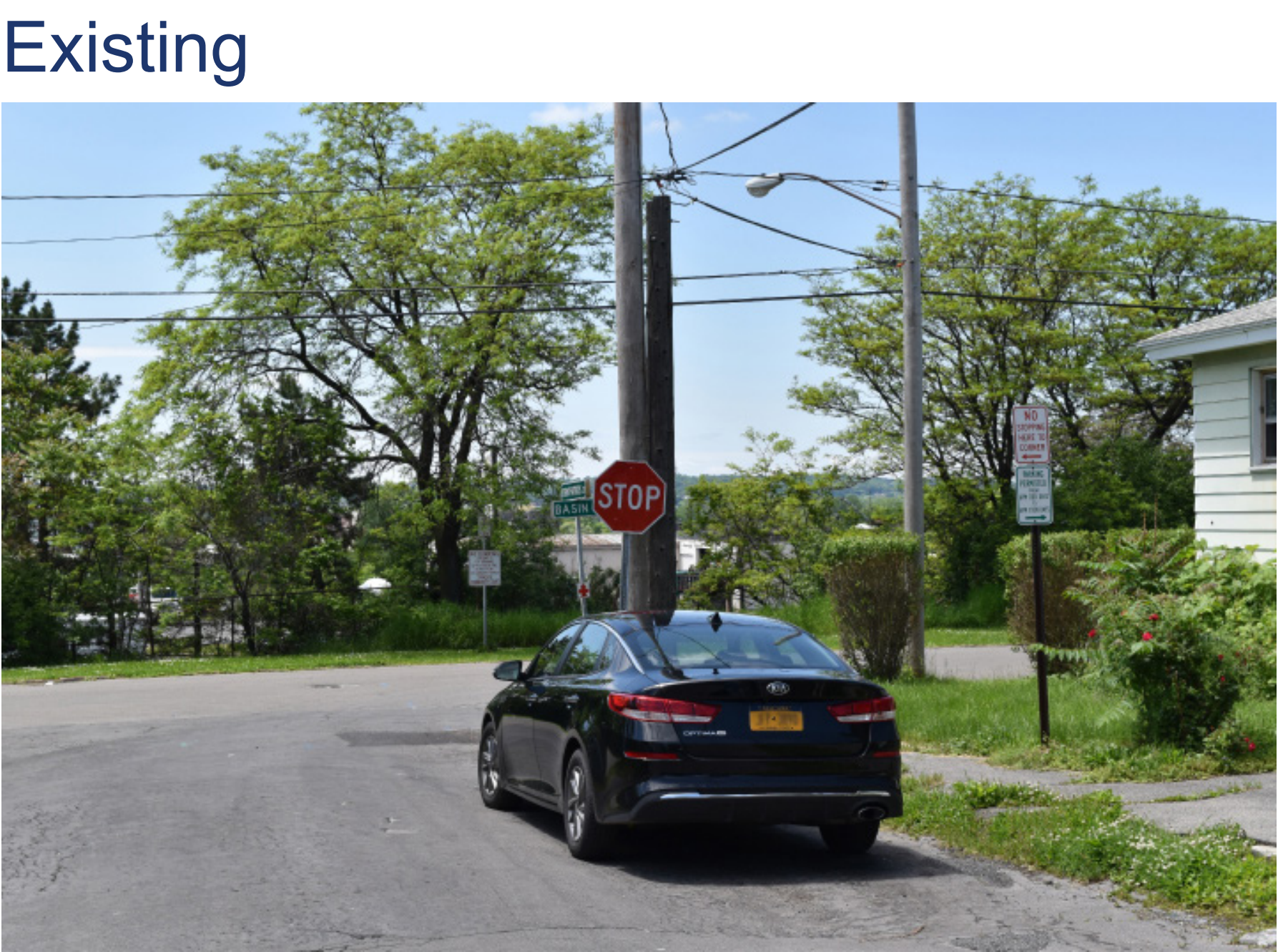
Simulation at DeWitt Town Hall on Butternut Drive



Simulation at Oakley Drive, near its intersection with Wells Avenue



Simulation at existing I-81, West of Oakwood Cemetery



Simulation at Kirkpatrick Street, near its intersection with Basin Street



Barriers would range from 12 to 20 feet high and would be made of concrete, except on bridges, where lightweight panels could be used.